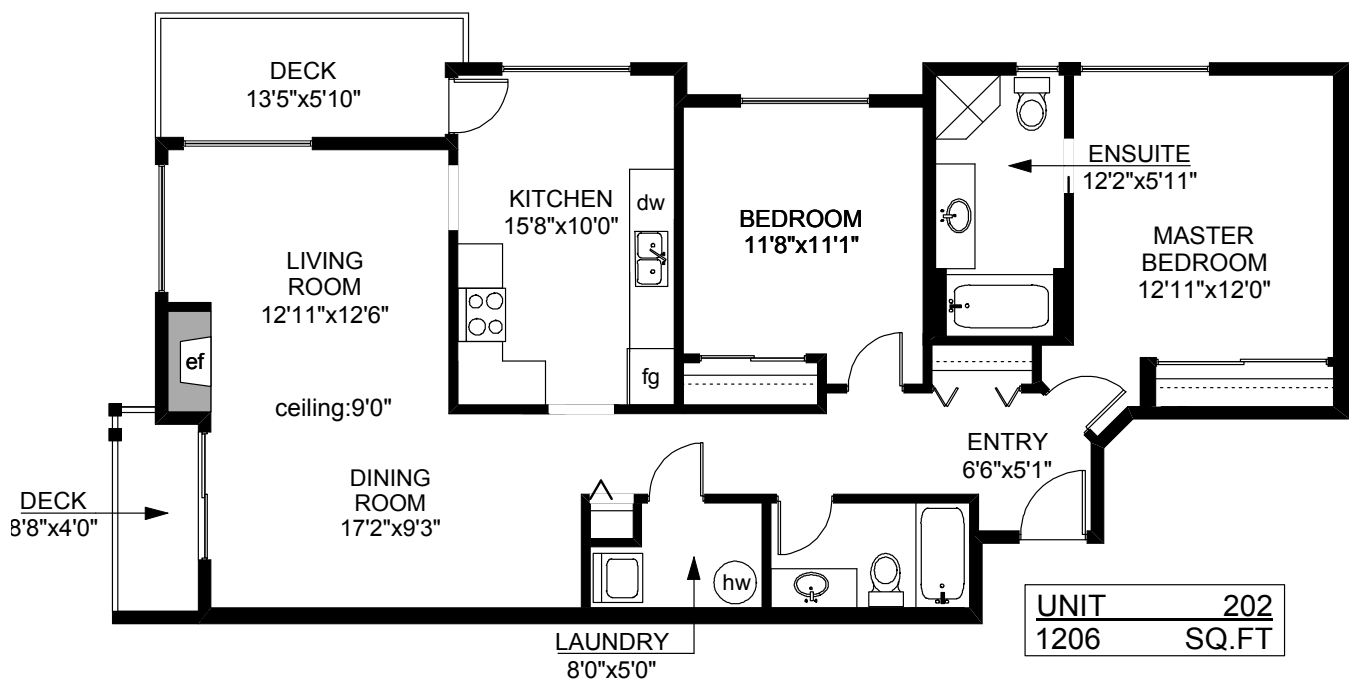


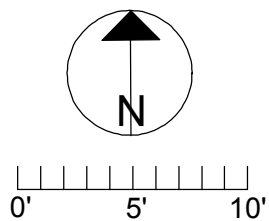


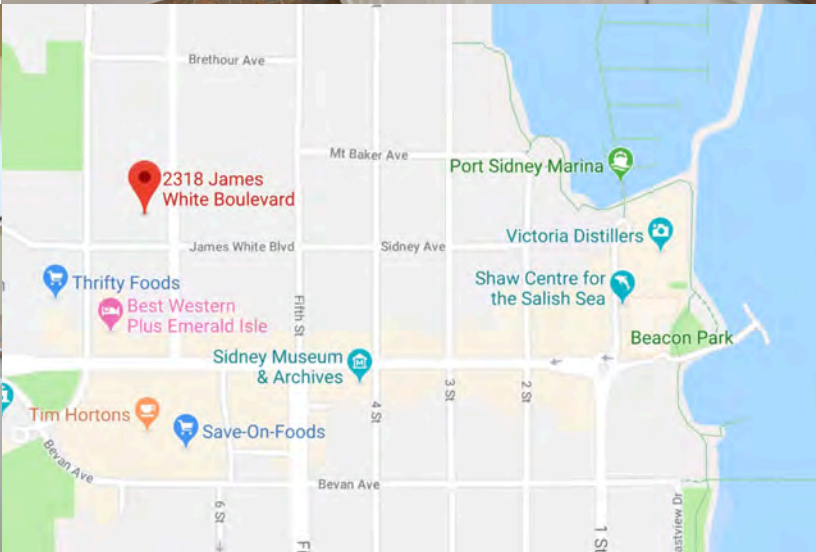
Relaxed living in Sidney by the Sea
202 - 2318 James White Boulevard
Hampden Court - Sidney, BC





	FINISHED SQ. FT.	UNFINISHED SQ. FT.	TOTAL SQ. FT.
UNIT 202	1206	0	1206
TOTAL	1206	0	1206
DECKS	0	118	118





202 - 2318 James White Boulevard Sidney, British Columbia

Spacious 2 bedroom condominium located strolling distance to the shops and restaurants of Beacon Avenue and Sidney's spectacular waterfront. Over 1200 square feet of living space, this bright and inviting corner suite, features 2 full bathrooms, 2 balconies, in-suite laundry room, dining room/ living room combination and a sunny eat-in kitchen. The large master bedroom features a 4 piece ensuite with separate tub and shower and his and hers closets.

A perfect place to call home with sunny west exposure, covered parking and separate storage. Pets are also welcome.

Don't miss your opportunity to live in this highly desirable and professionally managed building containing only 9 suites.

Hampden Court was built in 2005 by Wakefield Construction, one of Vancouver Island's leading builders.

The Details

Type: Condominium

Configuration: 1 level

Bedrooms: 2

Bathrooms: 2

Parking: Covered

Finished area: 1206 square feet

Balconies: 2 (118 square feet)

Building Information: Pet friendly



Ready to open a new door?

Hal Decter & Audra Poole

Office: 250.385.2033

VictoriaRealEstatePros.com

experts@victoriarealestatepros.com



CHRISTIE'S
INTERNATIONAL REAL ESTATE