



Private Oasis at the Base of Mount Tolmie

1751 Glastonbury Road

Victoria, BC

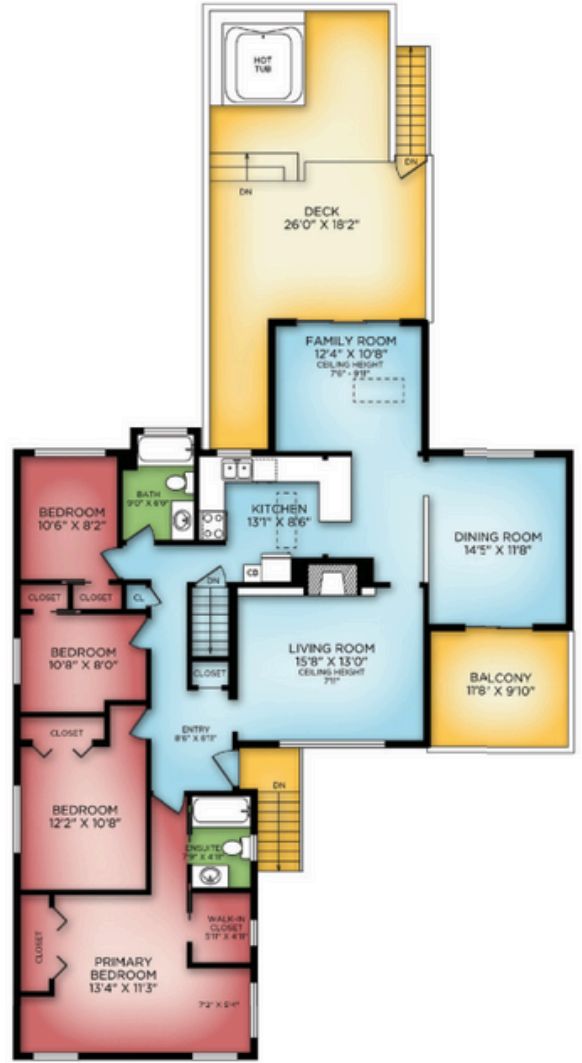


VICTORIA PROS
REAL ESTATE TEAM





MAIN FLOOR



LOWER FLOOR

Floor	Finished	Unfinished	Total	Other Areas	
Main	1771	0	1771	Carpport	278
Lower	943	127	1070	Workshop	332
Total	2714	127	2841	Deck	536
				Balcony	126

Measurements and square footage are from Proper Measure Precision and are not warranted as to their accuracy. Anyone relying on them must independently verify their accuracy.





1751 Glastonbury Road

This spacious and light filled residence is nestled near the crest of Mount Tolmie. With 6 bedrooms and 3 bathrooms, the home is highlighted with decks and a hot tub to luxuriate and enjoy the mountainside views.

The functional layout offers a workshop and fabulous 2 bedroom in-law suite. The multitude of bedrooms leave options to create a home office, studio or workout space. You'll feel worlds away in this private oasis on the large wooded lot with diverse plantings.

Ideally located near UVic, Cedar Hill Golf Course, shopping, cafés, and walking distance to trails that lead to the spectacular views from Mount Tolmie. Downtown Victoria is only a short 15-minute drive.

The Details

Type: Single Family Home

Year Built: 1956

Views: Mount Tolmie

Configuration: 2 levels

Bedrooms: 6

Bathrooms: 3

Kitchens: 2

Fireplace: Wood

Heat: Gas forced air & electric baseboard

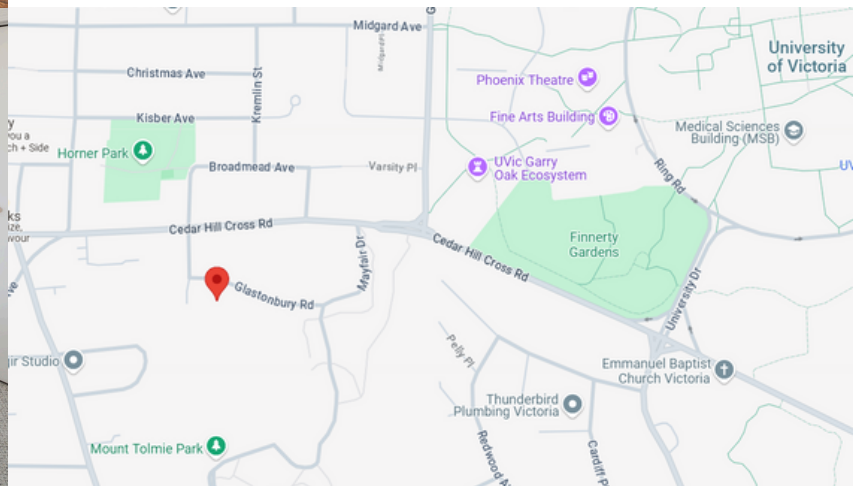
Finished area: 2,714 square feet

Unfinished area: 127 square feet

Deck & balcony: 662 square feet

Lot size: 14,326 square feet

Parking: Driveway & carport





Audra Poole
Licensed Realtor

Ready to open a new door?

We can help. We have over 15 years of real estate experience in Victoria, combined with a background in design, marketing and law.

Learn more at VictoriaRealEstatePros.com

Audra Poole **250.590.8157** | Robert Peterson **250.896.3463**

Experts@VictoriaRealEstatePros.com



Robert Peterson
J.D., B.C.L.