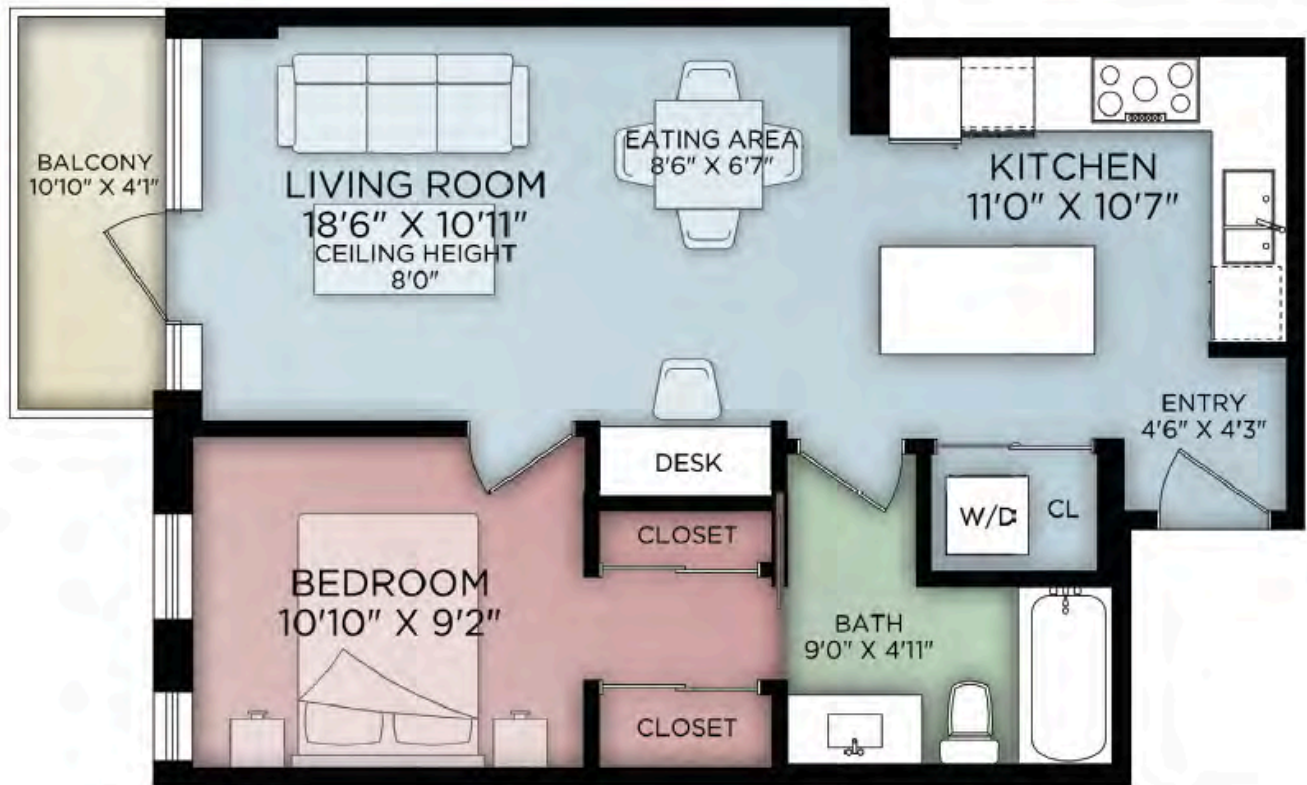


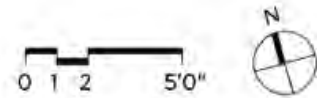


Modern Condo Living With Sweeping Views
710 - 838 Broughton Street
Victoria, BC





Floor	Finished	Unfinished	Total	Other Areas	
Main	633	0	633	Balcony	49
Total	633	0	633		



Measurements & square footage are from RealFoto Media & are not warranted as to their accuracy. Anyone relying on them must independently verify their accuracy.





710-838 Broughton Street, Victoria

This larger one-bedroom home in The Escher offers smart design, quality finishes, and sweeping west-facing views. Enjoy stunning sunsets overlooking downtown Victoria, the Sooke foothills, and beyond.

Thoughtfully upgraded, the home features a built-in desk ideal for remote work, laminate flooring in the bedroom, and a warm designer paint palette. The kitchen is sleek and efficient with quartz countertops, integrated dishwasher, and a Liebherr fridge. Comfort continues with heated bathroom floors, in-suite laundry, and a spacious walk-in closet.

Relax or entertain on the spectacular rooftop terrace with outdoor kitchen and panoramic views. This quieter downtown location is just steps to shops, restaurants, and the Inner Harbour.

The Details

Type: Condo

Views: West-facing to Sooke foothills

Year Built: 2017

Bedrooms: 1

Bathrooms: 1

Heat: Electric, in-floor radiant heat in bathroom

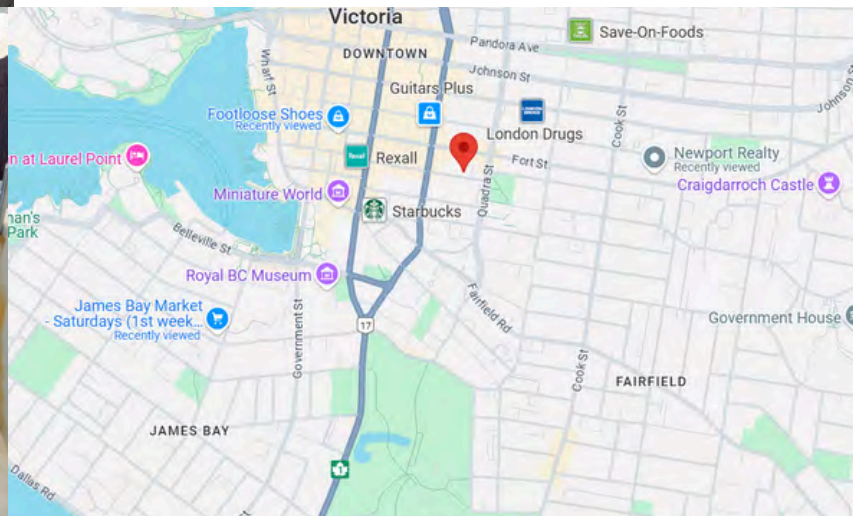
Finished area: 629 sq ft

Balcony area: 49 sq ft

Resident's terrace: Panoramic views, BBQs

Parking: Secured garage

Amenities: Secured locker, bike storage, workbench, dog wash & meeting room



The Escher **710-838 Broughton, Victoria B.C.**

Spacious, Sunlit, and Smartly Designed

This west-facing suite offers a larger one-bedroom layout in *The Escher*—the coveted 629 sq.ft. “Blake” floor plan. Gently lived in by the original owner, the home features floor-to-ceiling windows with panoramic views over the city to the Sooke foothills and beyond. A perfect option for professionals, downsizers, or investors looking for turnkey downtown living in a quiet yet central location.

Unit Details

- Interior: 629 sq.ft.
- Parking: One secure underground stall
- Monthly Hydro: Approx. \$30.70
- 2024 Property Taxes: \$2,675.44
- Strata Fees (2025–2026): \$383.93/month

Highlights

- Open-concept kitchen
 - quartz countertops
 - Liebherr fridge
 - Integrated dishwasher
 - Sink garburator
 - Undercabinet lighting
- Bathroom with in-floor radiant heat
- In-suite laundry
- Generous walk-in closet.

Upgrades

- Custom built-in desk for remote work
- Laminate bedroom flooring
- Designer paint scheme.

Building Amenities & Strata Highlights

- Expansive rooftop terrace with outdoor kitchen, lounge areas and panoramic views
- Pet wash station, bike workbench and oversized bike storage
- On-site storage locker
- Secure, gated underground parking
- Professionally managed strata with a strong financial position
- 2025 CRF spending approved for parkade lighting, depreciation report update, and electrical planning
- Comprehensive building insurance with replacement value of \$33,040,000
- Steel-and-concrete building

Bylaws & Policies

- No short-term rentals (under 30 days)
- Up to two pets allowed (some restrictions apply)
- Move-in fee applicable; Form K required for tenanted units
- No smoking in common areas or rooftop amenity

Ideal location

- Steps to restaurants and shopping in downtown
- Walk to the Inner Harbour and many parks
- Hop on the bike-only paths to quickly get anywhere downtown and easily connect to all Greater Victoria trails systems.
- Easy access to all major transit routes



Ready to open a new door?

We can help. We have over 15 years of real estate experience in Victoria, combined with a background in design, marketing and law. Learn more at VictoriaRealEstatePros.com

Audra Poole **250.590.8157** | Robert Peterson **250.896.3463**

Experts@VictoriaRealEstatePros.com



Robert Peterson
J.D., B.C.L.

Audra Poole
Licensed Realtor